

Working procedure

GYNkit® / GynoPrep® - Gynecological Cytology

Please take care of these operating instructions before use!
GYNkit® has to be used only by medical professionals!

I. Preparation

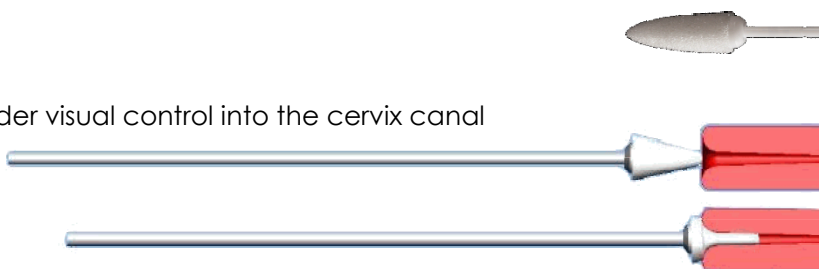
Clean the portio of irritating elements e.g. mucus
For example use grain tongs and swab

II. Smear collection

A. Smear

1. PapCone®

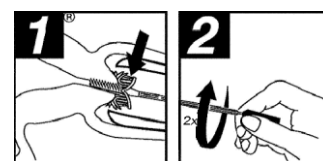
Insert PapCone® up to 2/3 under visual control into the cervix canal
Rotate PapCone® 2x 360°



Immediately after smear collection rinse out PapCone® by turning it jerkily in the GYNkit® - / GynoPrep®- liquid. Before taking out strip the padded cone of PapCone® with light pressure at the inside of the GYNkit® - / GynoPrep®-vial

2. Rovers® Cervex-Brush® Combi

Do not use Rovers® Cervex-Brush® Combi in case of a pregnancy
Insert the brush into the cervix canal as shown
Rotate the brush with light pressure clockwise two times



Immediately after smear collection separate the brush head from the stick and put the brush head into the GYNkit® - / GynoPrep®-liquid



B. Immediately close the GYNkit® - / GynoPrep®-vial firmly and shake it vigorously by hand or by vortexing

C. Transfer the GYNkit® - / GynoPrep®-vial to the laboratory within 1 week

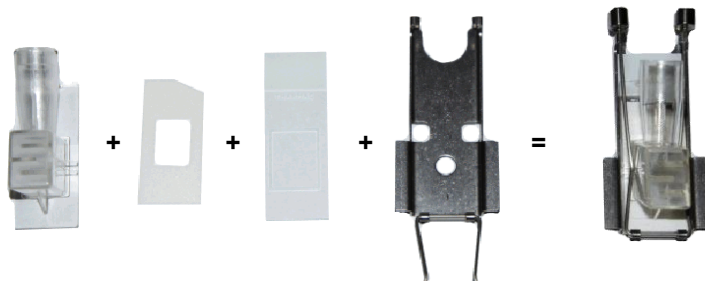




III. Processing the samples in the laboratory

A. Assembling

Assemble Square Cellfunnel®
with a new Square-filter card/
Square-seal
and a new Square-cytoslides
and a CellClip
according to the instructions



B. Identification

Assign Square Cellfunnel® to the patient sample
Appropriately label the Square-slide

C. Cytocentrifuge

Insert the Square Cellfunnel®-system into the rotor of the
Cellspin®-cytocentrifuge as shown

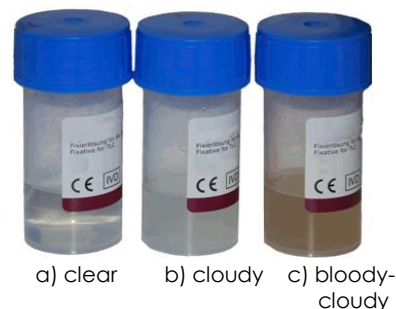


D. Homogenization

For receiving a homogeneous cell distribution
shake well the *GYNkit*®-/ *GynoPrep*®-vial or vortex it on a low
level

E. Turbidity

Determine turbidity of the sample as shown
In correspondence with the turbidity
please notice the following instructions



Please notice:

Due to overlap of cells, very bloody preparations can be only limited evaluated.
Recommendation: Reject the sample and repeat the sample collection.



F. Transfer of sample

Pipette the sample (if needed dilution too) into the Square Cellfunnel®, which hangs up in the rotor of *Cellspin*®-cytocentrifuge

Recommendation for dilution*:

1. Clear samples like in figure a):
Pipette 1 ml of the sample
2. Cloudy samples like in figure b):
Mix 0.5 ml of the sample and 0.5 ml of *GYNkit*®-I *GynoPrep*®-dilution liquid
Pipette 0.5 ml (sparse cell settlement, less cells) up to 1.0 ml
(tight cell settlement, more cells) of the mixture, according to desired cell quantity
3. Bloody-cloudy samples like in figure c):
If possible reject the sample and repeat the smear collection
Alternative: Mix 0.5 ml of sample with 0.5 ml *GYNkit*®-I *GynoPrep*®-dilution
Pipette 0.5 ml of the mixture



G. Centrifugation

Centrifugate for 10 min at 1.000 rpm

H. End

After finishing centrifugation remove the sample and disassemble the Square Cellfunnel® and remove Square-slide

I. Staining

Stain cytoslide according to Papanicolaou and coverslip it.
The preparation should not be darker as shown.



*) Please notice:

You should create operating instructions for sampling, preparation and staining of samples, which are adjusted to the conditions of your laboratory. It has to be adjusted to the processed question.



For single use only (do not reuse)
To be used only by medical professionals



Storage at room temperature



ATTENTION: Liquid is flammable and harmful



Durability: see label